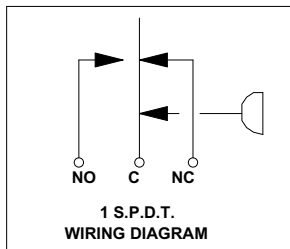
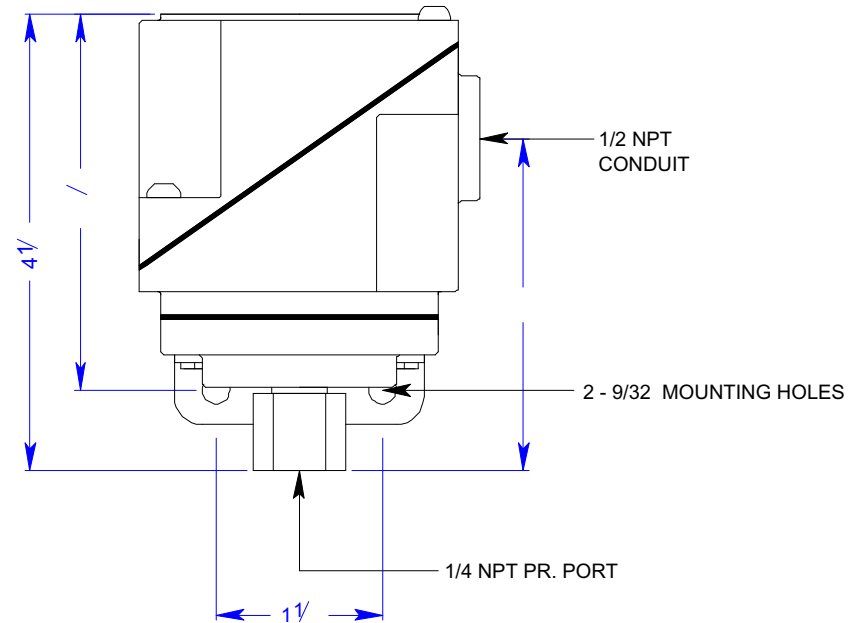
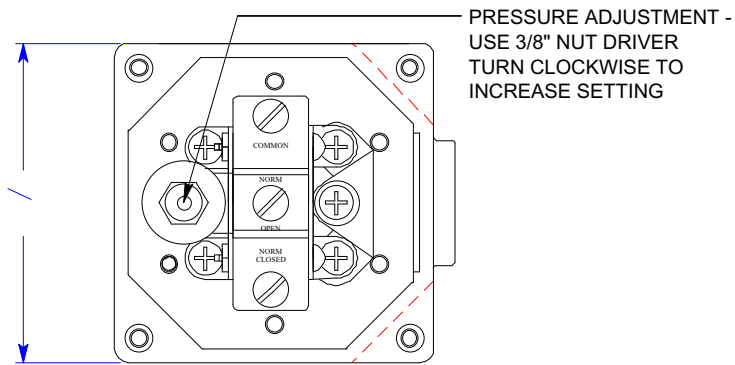


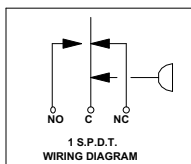
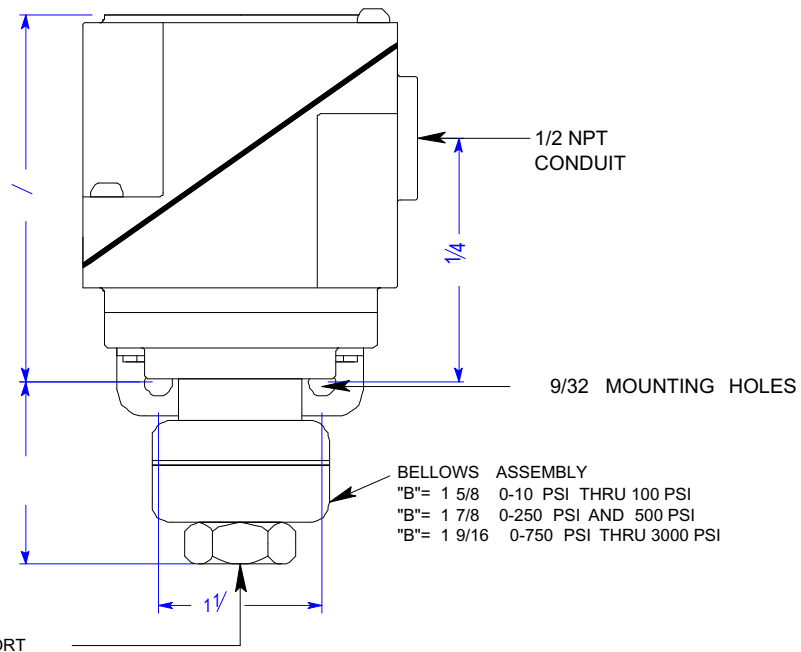
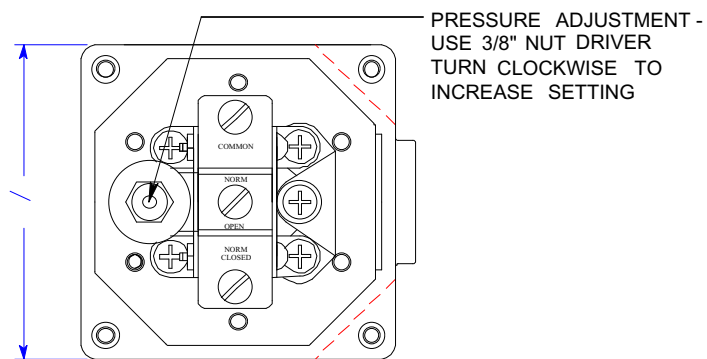
Case: Cast Aluminum, painted green.
 Switch: Snap Action; maximum of 2 SPDT.
 Sensitivity: $\pm 0.5\%$ of range for SPDT.
 Conduit Connection: 2 " NPT.



DRAWN BY: E. H.	ALL DIMENSIONS IN INCHES	
CHECKED BY:	TOLERANCES (unless otherwise stated)	
ENG. APPROVAL:	Fractional: 1/64"	Decimal: 0.06"
APPROVED BY:	REVISION No. & DATE: APR 5 2002	

TITLE: 2WPS PRESSURE SWITCH
DRAWING NO: PS-2WPS

Case: Cast Aluminum, painted green.
 Switch: Snap Action; maximum of 2 SPDT.
 Sensitivity: $\pm 0.5\%$ of range for SPDT.
 Conduit Connection: 2 " NPT.
 Wetted Parts: S/S Bellows.



DRAWN BY: E. H.

CHECKED BY:

ENG. APPROVAL:

APPROVED BY:

ALL DIMENSIONS IN INCHES

TOLERANCES
(unless otherwise stated)

Fractional: 1/64"

Decimal: 0.06"

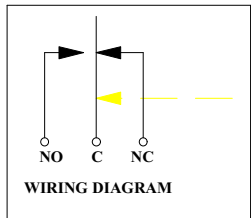
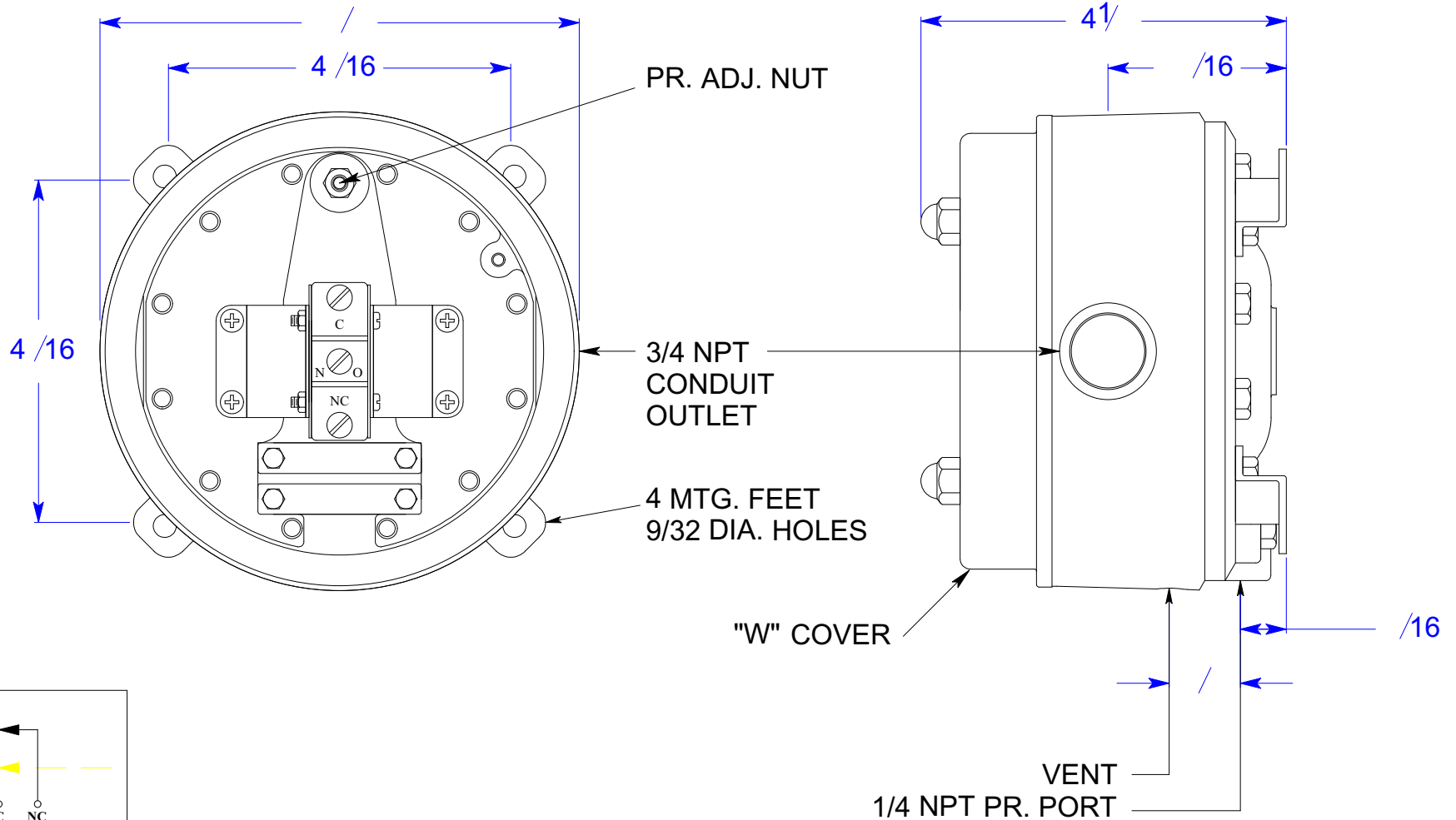
REVISION No. & DATE: APR 5 2002

TITLE:

2WPS-B PRESSURE SWITCH

DRAWING NO: PS-2WPS-B

Case: Cast Aluminum, painted green.
 Switch: Snap Action; maximum of 4 SPDT.
 Sensitivity: $\pm 1\%$ of range for SPDT.
 Conduit Connection: 4 " NPT.



CONTACTS SHOWN WITH SWITCH NOT UNDER PRESSURE



WINTERS INSTRUMENTS

DRAWN BY: E. H.

CHECKED BY:

ENG. APPROVAL:

APPROVED BY:

ALL DIMENSIONS IN INCHES

TOLERANCES
(unless otherwise stated)

Fractional:	1/64"
Decimal:	0.06"

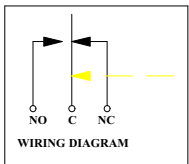
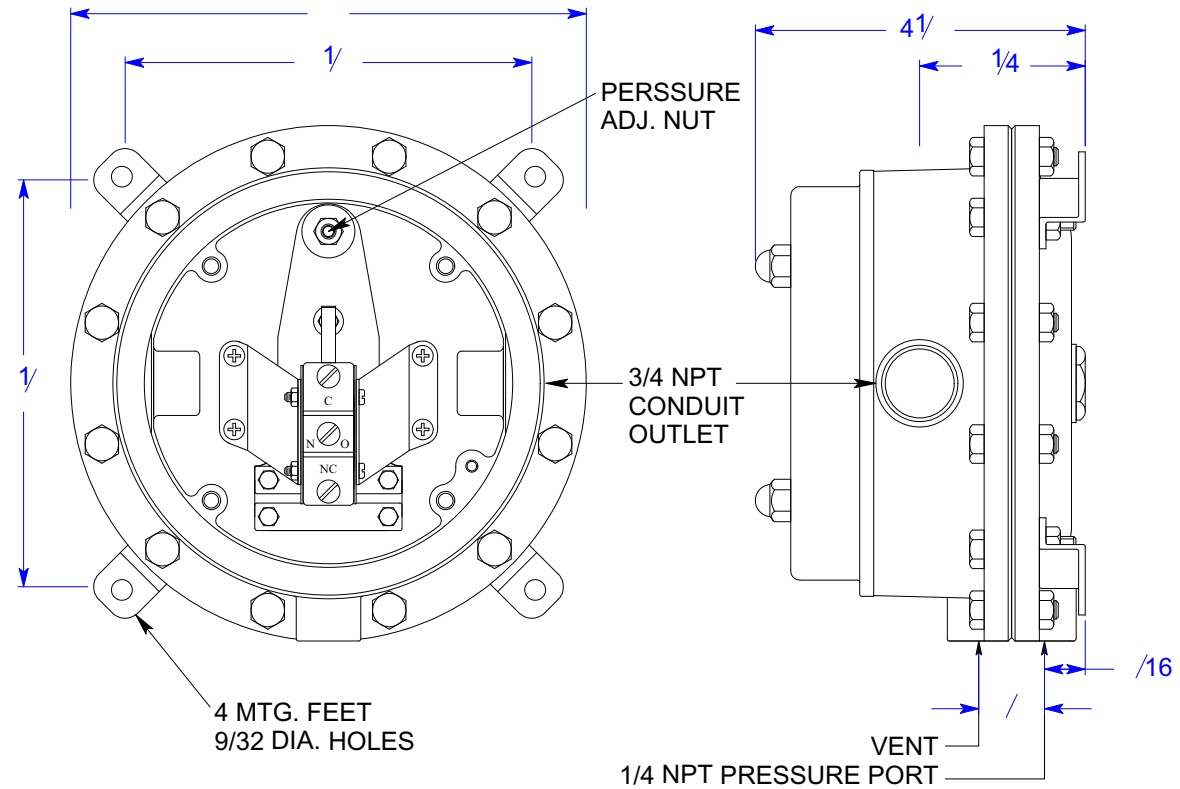
REVISION No. & DATE: APR 5 2002

TITLE:

6WPS PRESSURE SWITCH

DRAWING NO: PS-6WPS

Case: Cast Aluminum, painted green.
 Switch: Snap Action; maximum of 4 SPDT.
 Sensitivity: $\pm 1\%$ of range for SPDT.
 Conduit Connection: 4 " NPT.



CONTACTS SHOWN WITH SWITCH NOT UNDER PRESSURE



WINTERS INSTRUMENTS

DRAWN BY: E. H.

CHECKED BY:

ENG. APPROVAL:

APPROVED BY:

ALL DIMENSIONS IN INCHES

TOLERANCES
(unless otherwise stated)

Fractional:

1/64"

Decimal:

0.06"

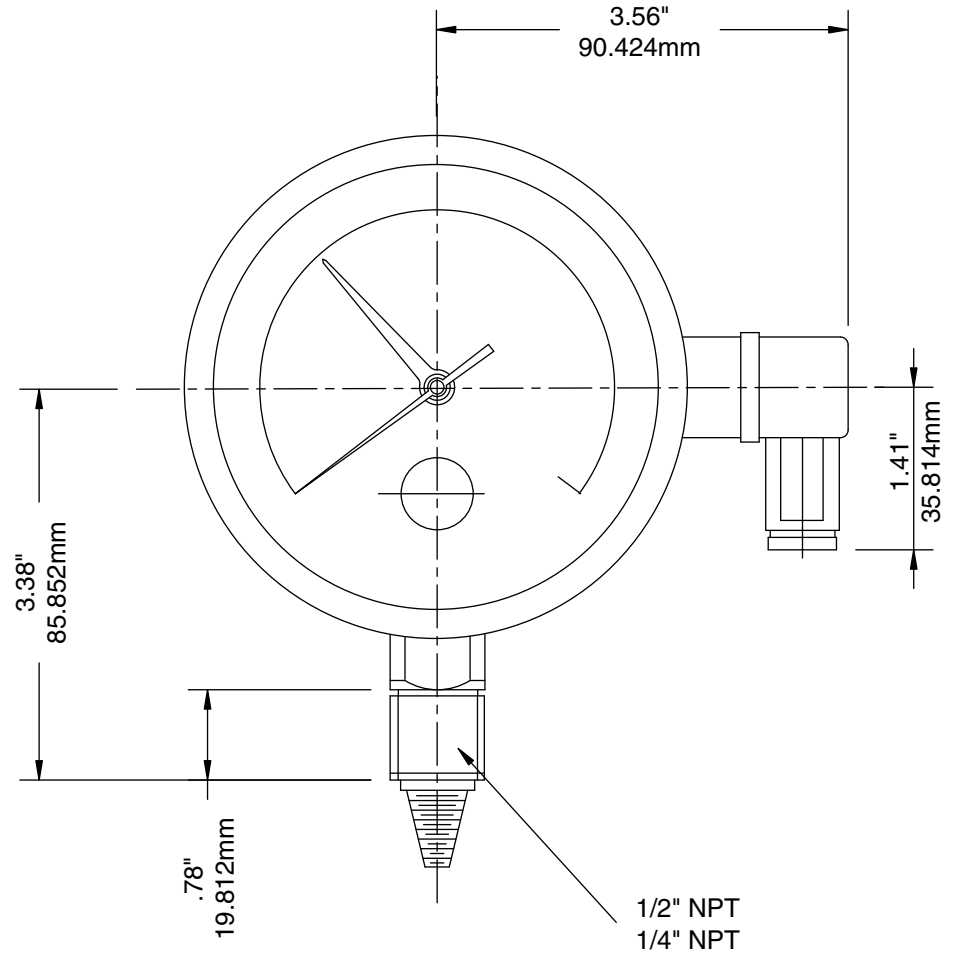
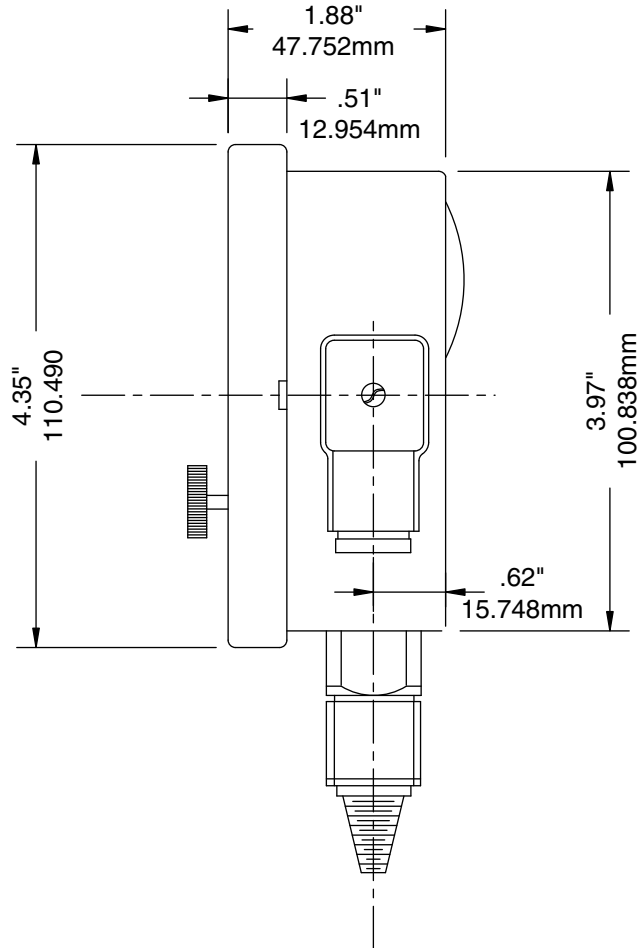
REVISION No. & DATE: APR 5 2002

TITLE:

7WPS PRESSURE SWITCH

DRAWING NO: PS-7WPS

Ambient Temperature: -25°C / 65°C (-13°F / 150°F).
 Process Temperature: -25°C / 65°C (-13°F / 150°F).
 Case: 304 S/S.
 Bezel: 304 S/S.
 Lens: Plexiglass.
 Dial: Aluminum.
 Tube: Ph Bz. / 316L S/S.
 Movement: Brass / 304 S/S.
 Socket: Brass / 316L S/S.
 Welding: Silver alloy / TIG.
 Accuracy: ±2.5% of full scale.
 Enclosure: IP50.



WINTERS INSTRUMENTS

DRAWN BY: E. H.

CHECKED BY:

ENG. APPROVAL:

APPROVED BY:

ALL DIMENSIONS IN INCHES / MM

TOLERANCES
(unless otherwise stated)

Fractional:	1/64" .4mm
Decimal:	0.06" 1.5mm

REVISION No. & DATE: APR. 17, 2002

TITLE:

4" INDICATING PRESSURE SWITCH,
BOTTOM CONNECTION

DRAWING NO: PS-IND-4-BTM