



Clean In Place (CIP) Steam Filtration



Room Humidification



Steam Filtration to Sterilizers and Autoclaves

Balston Filters for Steam Sterilization Systems

Steam Filters

**Eliminate instrument staining, spotting,
and rusting**

**Reduced contamination of sterilizer
interiors**

Reduced maintenance



Balston Steam Filters

The 23R Steam Filter contains a patented Microfibre® Filter Cartridge in a rugged stainless steel housing designed especially for steam service. Included as standard items with the 23R Steam Filter are a stainless steel condensate drain and a high quality bleeder valve. The unit, as received, is complete and ready for installation.



Model 23/75R

How the Balston Steam Filter Works

The 23R Steam Filter contains a patented Microfibre® Filter Cartridge in a rugged stainless steel housing designed especially for steam service. Included as standard items with the 23R Steam Filter are a stainless steel condensate drain and a high quality bleeder valve. The unit, as received, is complete and ready for installation.

Steam enters the housing and moves into an expansion chamber, where much of the condensate is removed from the steam by the abrupt change in flow direction and velocity. The steam then flows upward in the housing, through the Grade R Microfibre filter cartridge, and downward to the exit port. The water draining from the filter cartridges and expansion chamber is removed from the housing by the automatic condensate drain.

The Grade R Microfibre filter cartridge, the heart of the 23R Steam Filter, combines sturdy construction with remarkably efficient filtration of solid particles and liquid droplets. The cartridge is rated at 98+% at 0.1 micron. Solid particles remain trapped in the depth of the filter cartridge, and liquid water drips from the filter cartridge to the automatic drain. The Microfibre filter cartridge is constructed from chemically inert borosilicate glass fibers and fluorocarbon resin binder. The filter cartridge is completely free of impurities which could extract into the steam.

The Balston 23/75R Steam Filter is recommended for use on 3/4" and 1" steam lines (line sizes for the vast majority of steam sterilization systems). Please consult our technical support department for recommendations on filters for larger steam lines. Use only products designed specifically for steam filtration in steam installations.

Principal Specifications

Model	Port Size	Filter Cartridge Designation	Materials of Construction			Seals	Maximum Steam Pressure	Shipping Weight
			Head	Bowl	Internals			
23/75R	1" NPT (1)	200-75-R (2)	304SS	304SS	304SS	EPR	80 psig	25 lbs. (11 kg)

Ordering Information

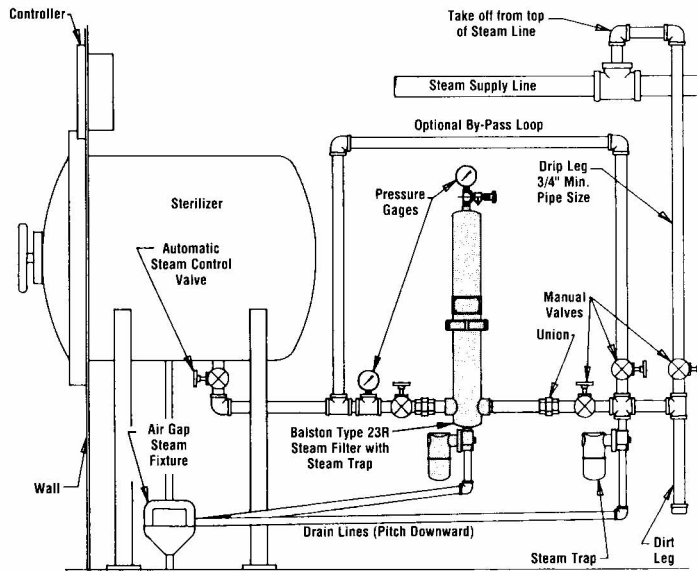
For assistance, call toll-free at 1-800-343-4048 8AM to 5PM Eastern Time

Model	Automatic Drain	No. Filter Cartridges Required	Replacement Filter Cartridges (box of 15)
23/75R	Included	1	200-75-R

Notes:

1 The 1" port size can be installed in a 3/4" line by using the appropriate reducing bushings.

2 Each filter is supplied with one filter cartridge installed. Replacement filter cartridges are sold in boxes of 15. To order, use complete size and grade designation; for example 200-75-R.



Typical Sterilizer Recommended Installation



Unique, graded efficiency design provides exceptionally long filter life

Reduces costly sterilizer maintenance

Easy to change filter cartridge - no tools required

Safe, inert materials of construction

Filtering Water with the Balston LP-20 Water Filter

Dirt and rust in the hot or cold water supply to washer-sterilizers leave deposits and stains on valuable instruments and sterilizers. In most hospitals, the cleanliness of the water depends upon the efficiency of the municipal water treatment system. Excessive dirt in the water can be an intermittent problem caused by a drought, a fire in the neighborhood, water main problems, or scores of other random events well beyond the control of the hospital engineers. This unpredictable, expensive problem can be permanently solved by installing an inexpensive and easily maintained Balston LP Grade 20 water filter on the water line to the washer-sterilizer. On any washer-sterilizer, installing a Balston 23R Steam Filter on the steam line and a Balston LP Grade 20 Water Filter on the water line guarantees freedom from the outside contaminants.

How the cartridge works

The LP Grade 20 liquid filter cartridge is constructed entirely from polypropylene, rendering it safe and inert for use in hospital water supplies. The polypropylene construction makes this filter acceptable for use in cold and hot (to 180°F/82°C) water supplies. The filter cartridge consists of a polypropylene external support structure with EPR seals and an internal filtering element. The internal filter is made of self-bonded

polypropylene fibers which are graded from coarse to fine in the direction of flow (inside-to-outside). Since the coarse inner layer acts as a prefilter for the finer outer layer, the life of this cartridge is exceptionally long. For example: Approximately 50,000 gallons of water can be filtered by a single 20" liquid filter cartridge.



Model 53/50



Model 53/95

Models 53/50 and 53/95

These models are constructed entirely of polypropylene and designed for a single filter cartridge in the 10" and 20" lengths. The Model 53 housings are used for cold water service only.

Filter Assembly Selection Recommendations

Water Line Size (1)	Cold Water (below 125°F/52°C)
3/4"	53/95 with LP-200-95-20
1/2"	53/50 with LP-200-50-20

Principal Specifications

Model	Port Size	Materials of Construction				Maximum Temperature	Maximum Pressure	Maximum Diff. Press.	Shipping Weight (1)	Dimensions
		Head	Bowl	Internals	Seals					
COLD WATER FILTER										
53/50	3/4" NPT	Polypro.	Polypro.	---	EPR	125°F (52°C)	125 psig	60 psig	4 lbs (2 kg)	5"D x 12"L (13cm x 31cm)
53/95	3/4" NPT	Polypro.	Polypro.	---	EPR	125°F (52°C)	125 psig	60 psig	6 lbs (3 kg)	5"D x 22"L (13cm x 56cm)

Ordering Information

For assistance, call toll-free at 1-800-343-4048 8AM to 5PM Eastern Time

Model	No. Filter Cartridges Required (2)	Filter Cartridge Designation
53/50	1	LP-200-50-20
53/95	1	LP-200-95-20

Notes:
 1 LP Grade 20 Filter Cartridge. Inside-to-outside flow.
 2 Filter Cartridge not included with housing and must be ordered separately.



Long filter life

Easy to change filter cartridge

**Eliminate unexpected downtime due to
clogged components**

**Stainless steel and Teflon® provide safe,
trouble-free operation**



Model A34

Model A34

The cleanliness of Ethylene Oxide (EtO) typically varies from supplier to supplier and from delivery to delivery. In addition, EtO inherently polymerizes, causing valves to clog and regulators to malfunction. Filtering EtO at the point of use assures the delivery of clean EtO to the sterilizers, significantly improves sterilizer performance, and reduces sterilizer maintenance.

Balston EtO Filters, specifically designed for ethylene oxide service, are constructed of stainless steel with Teflon seals. The ET Grade 30 filter cartridge is inexpensive and simple to replace when necessary.

The model A34 is sized for most hospital sterilizer applications.

*Teflon® is a registered trademark of the Dupont Company.

Principal Specifications

Model	Port Size	Filter Cartridge Designation	Materials of Construction			Seals	Maximum Steam Pressure	Shipping Weight
			Head	Bowl	Internals			
A34	1/4" NPT	ET-100-12-30 (1)	316SS	316SS	316SS	Teflon (2)	250 psig	4 lbs. (2 kg)

Ordering Information

For assistance, call toll-free at 1-800-343-4048 8AM to 5PM Eastern Time

Model	Filter Cartridge Designation
A34 Included	ET-100-12-30

Notes:
1 Each filter is supplied with one filter cartridge installed.

2 Each filter is supplied with one spare Teflon seal set.